

A woman with a baby on her back stands in a rural agricultural setting. She is wearing a patterned top and a blue skirt. The background shows a field with a wooden fence and trees under a cloudy sky. The text is overlaid on the image.

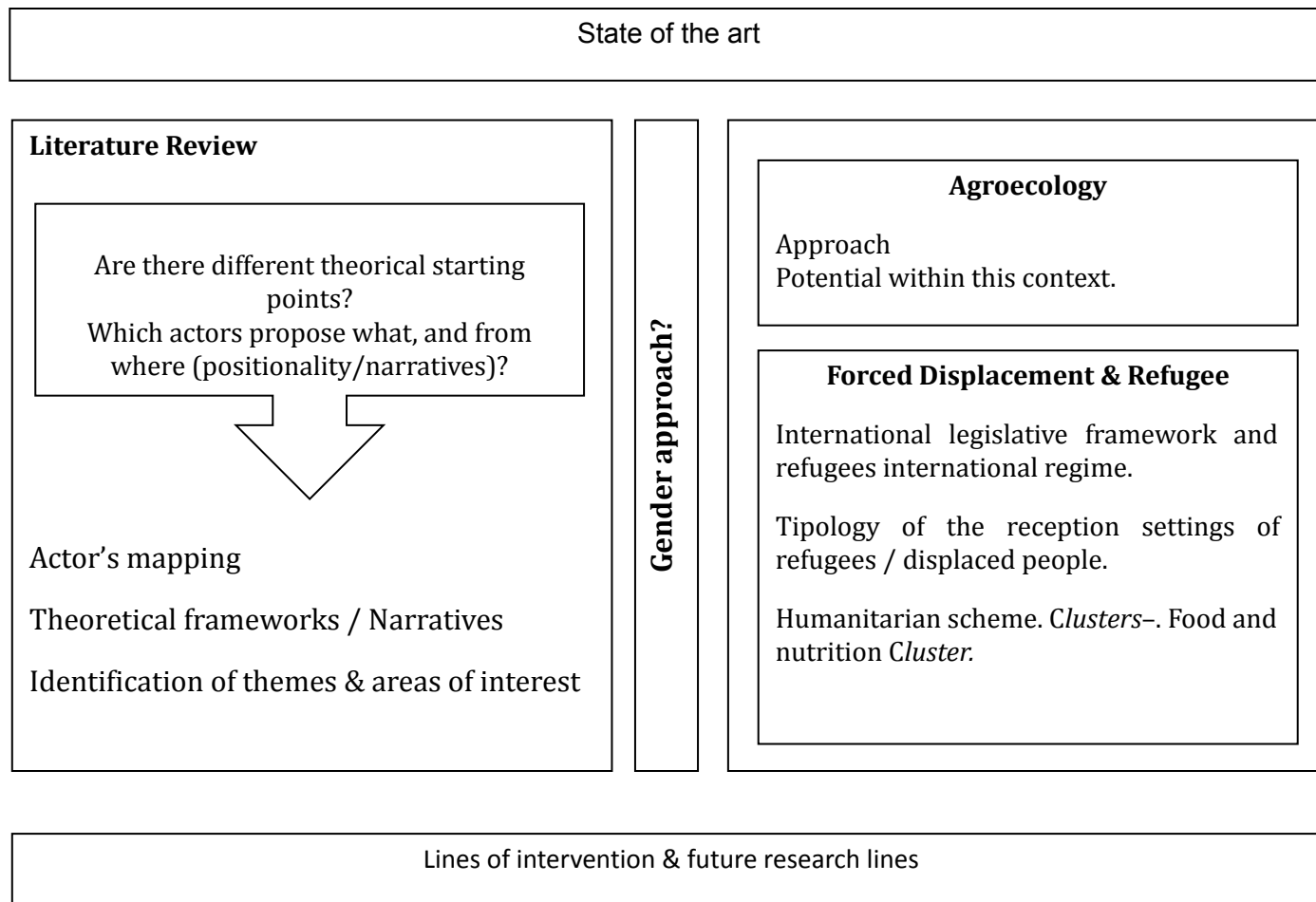
# AGROECOLOGY IN CONTEXTS OF REFUGEE AND FORCED DISPLACEMENTS: BARRIERS & OPPORTUNITIES

Celia Murias, Marta G. Rivera Ferre, Abel Samperiz



# Starting points of this exploratory study

What could AE contribute to humanitarian interventions in refugee contexts and forced displacement?

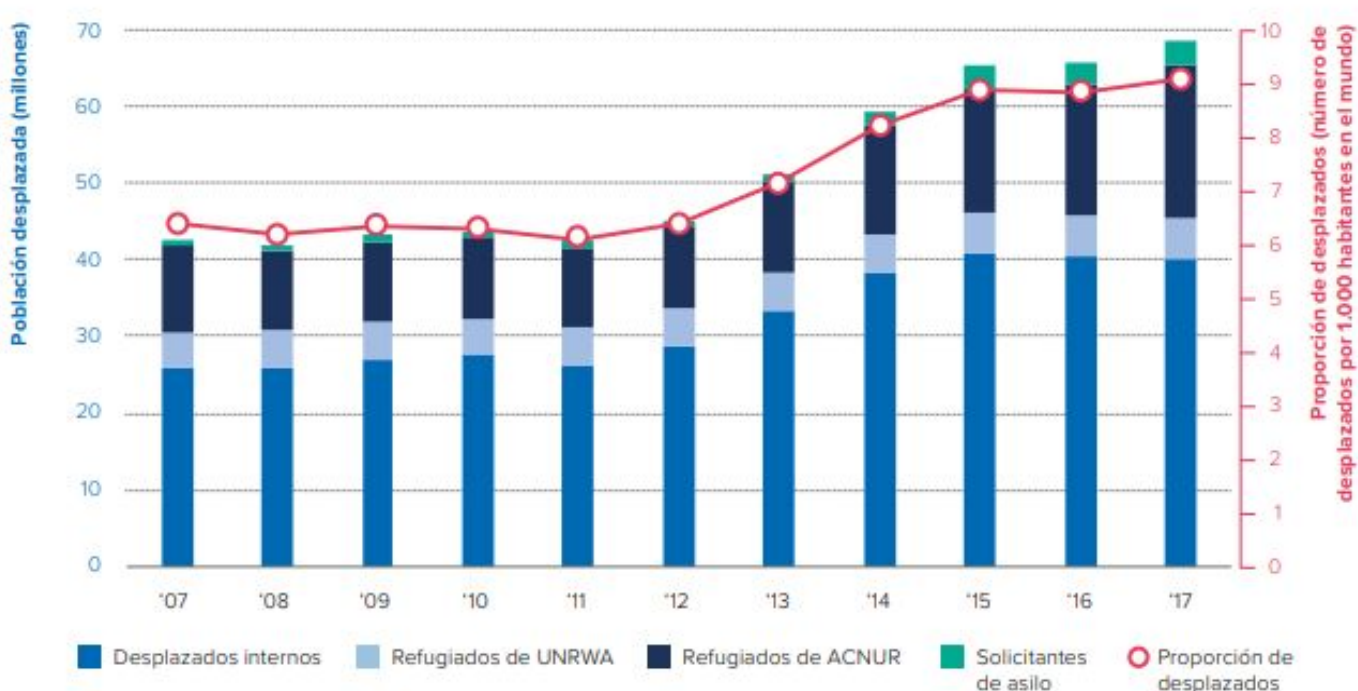


# Keys about forced displacement

\*Data from 2018

- 70 millions of displaced people (1/2 under 18yr) - refugees / IDPs / asilum-seekers
- Trends:
  - **Protracted** (+25.000 people, + 5 years). After emergency, no stable/safe situation.
  - **Substantial Growth** --- rise more than 50% on a decade
  - **Urban** –refugees and IDPs, tendency towards the cities, + camps=accidental *cities* [Adam-Bradford]

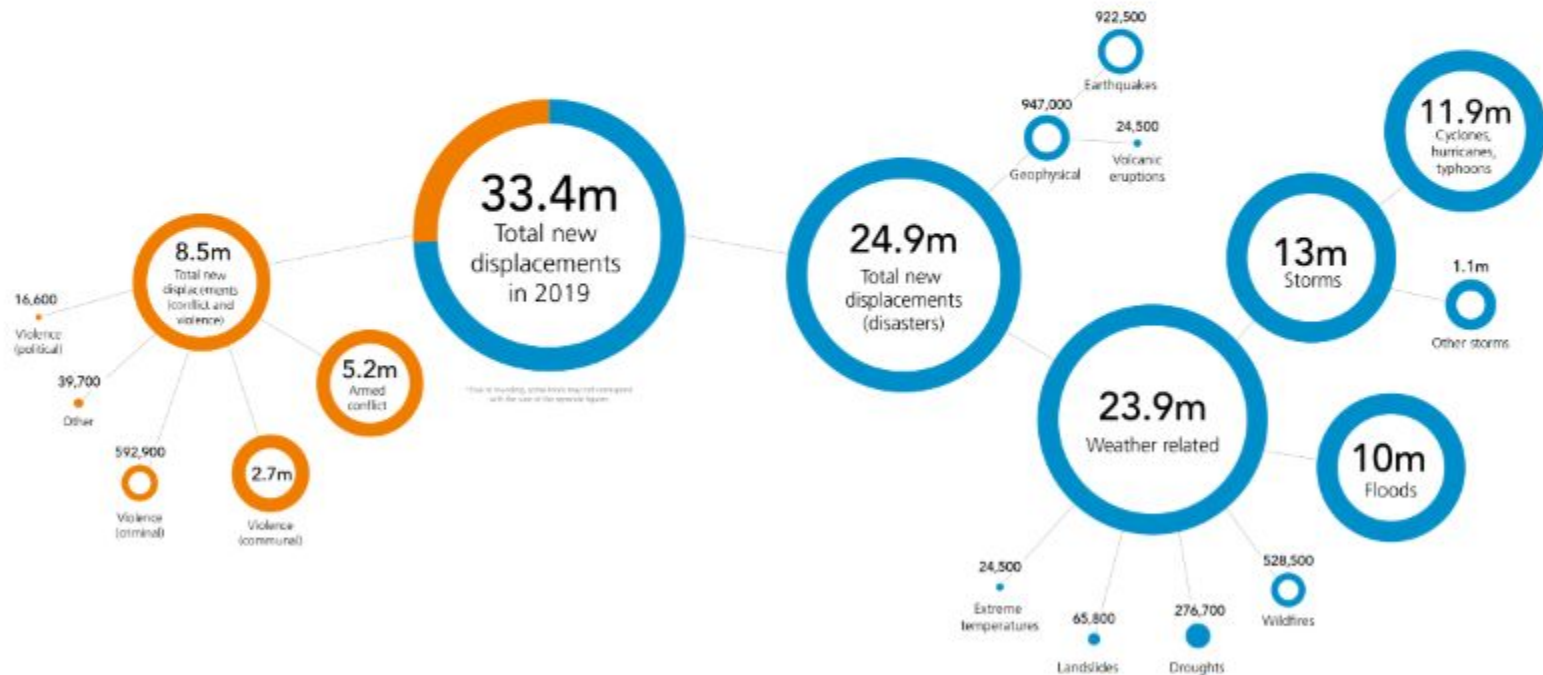
Gráfico 1 | **Tendencia del desplazamiento global y proporción de desplazados** | 2007-2017



# Keys about forced displacement

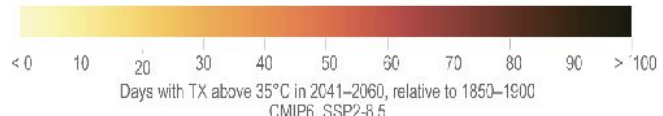
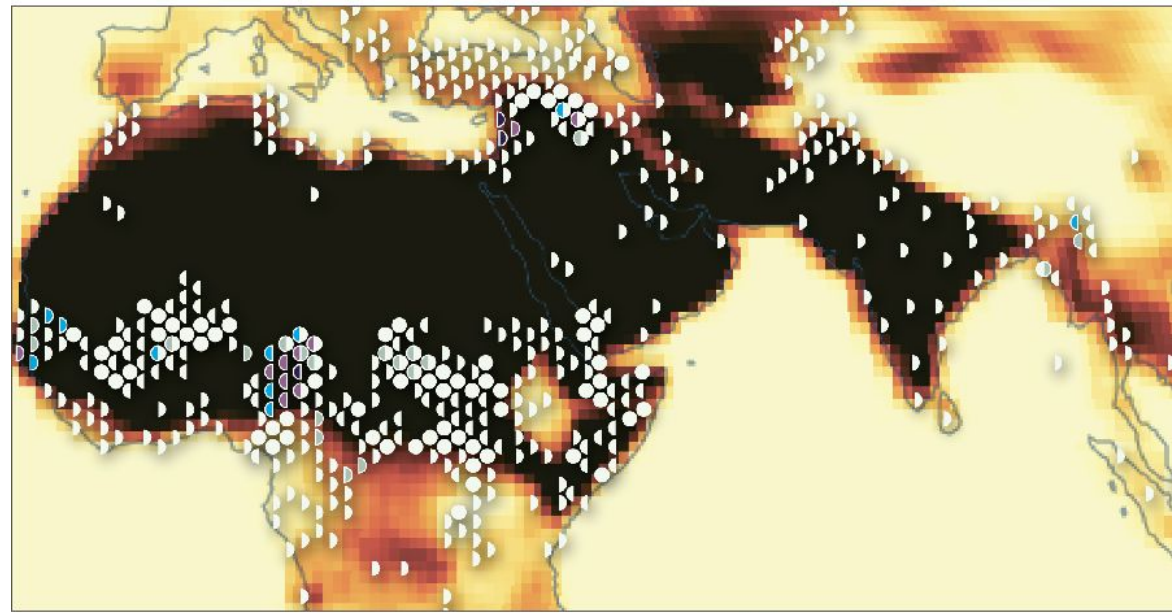
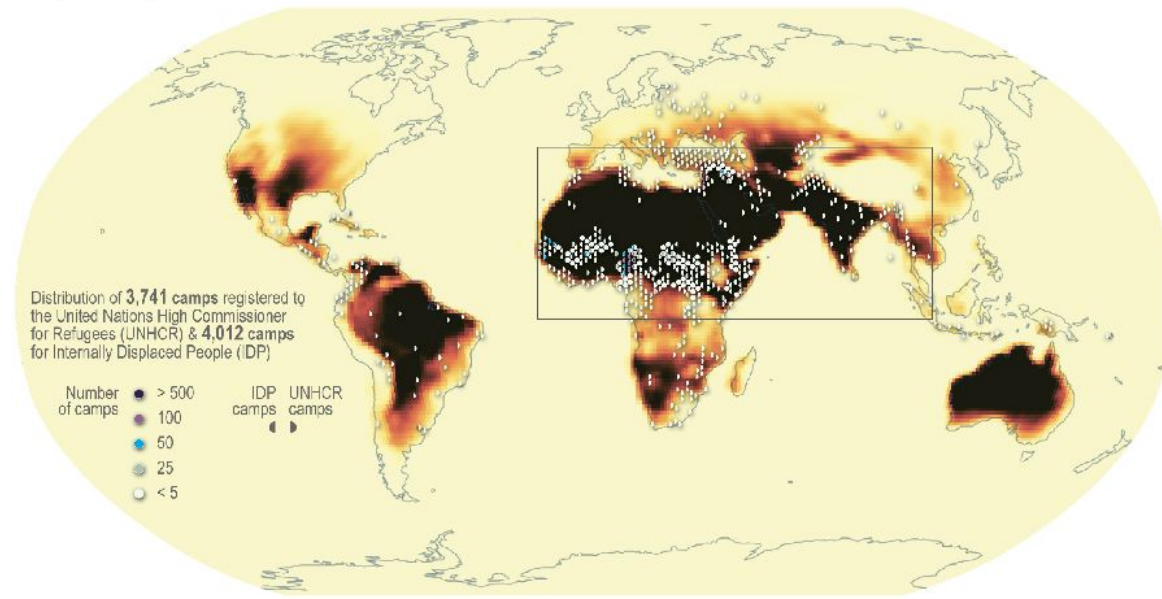
IDPs • Internally Displaced People --- **Disasters**

NEW DISPLACEMENTS IN 2019: BREAKDOWN BY CONFLICT AND DISASTER TYPE



# Present-day global distribution of camps for refugees & internally displaced people

Background of days with TX above 35°C in 2041–2060, relative to 1850–1900



# Evolution of the Humanitarian System

\* TOWARDS INTEGRATION / HARMONIZATION WITH DEVELOPMENT \*

Continuum Vs. Conguuum

## CLASSIC H.

Hum. System  
Food Aid  
Disaster is exceptional  
Crisis=Needs  
UN Agencies

**Hum. Syst. Reform 2005**  
**Clusters approach**  
[Coop · Coord. · Efficiency]

**Comprehensive Refugee**  
**Response Framework (CRRF)**

## RESILIENT H. SELF-RELIANCE

Hum. Ecosystem  
Disaster is the norm  
Needs – Capac. & resilience  
Nacional/local/other agents

NY  
Declaration  
'16

**LRRD / VARD**  
[+ capacities  
- vulnerabilities]

**+ HR Approach**

**Human Security**

**WHS '16**  
*New Way of Working* = SDG  
NEXUS HA-D  
[- risks = - needs]  
NEXUS 3  
[+ Peace/securitacion]

'18  
**GLOBAL  
COMPACT  
ON  
MIGRANTS**

**LIVELIHOODS & ECONOMIC  
INCLUSION**

### CRITICS

Corruption/state-support R.  
**Dependency**  
High cost  
Impact on local prices  
Disassociated from local

### SUSTAINABLE LIVELIHOODS

**Basic Needs** (Food assistance)  
**Livelihood protection** (Assets, Food  
Prod. Systems, NR integral manag.)  
**Liv. Promotion** (AGI, diversification,  
Access to credit & markets, IRR)

### CRITICS

Donors' priority: *Cost-effective*  
Economistic  
Acritical / apolitical  
No proven effectiveness

**ENABLING POLICIES & FRAMEWORKS for AGROECOLOGY**



# FOOD SECURITY CLUSTER (FSC)

2011 · NEXUS · Cluster with more support (35%)

“To integrate aid in goods (in kind payment) –*food-aid*–, agricultural issues and other interventions related to livelihoods, and address at a political level the related institutional and policy issues”

**gFSC = WFP + FAO + INGOs (E. global support)**

+

UNHCR = Joint Evaluation

2016 – SAG Strategic Advisory Group  
(8 members; ACH, FAO, WFP, Oxfam, etc.)

**5 technical working groups** for good practices, innovative solutions, tools...

*Cash & Markets*

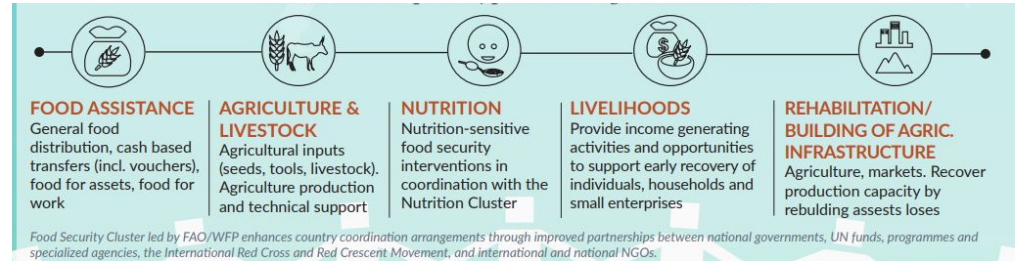
FS & livelihoods in urban settings

Nutrition Intercluster Group

Programmes quality

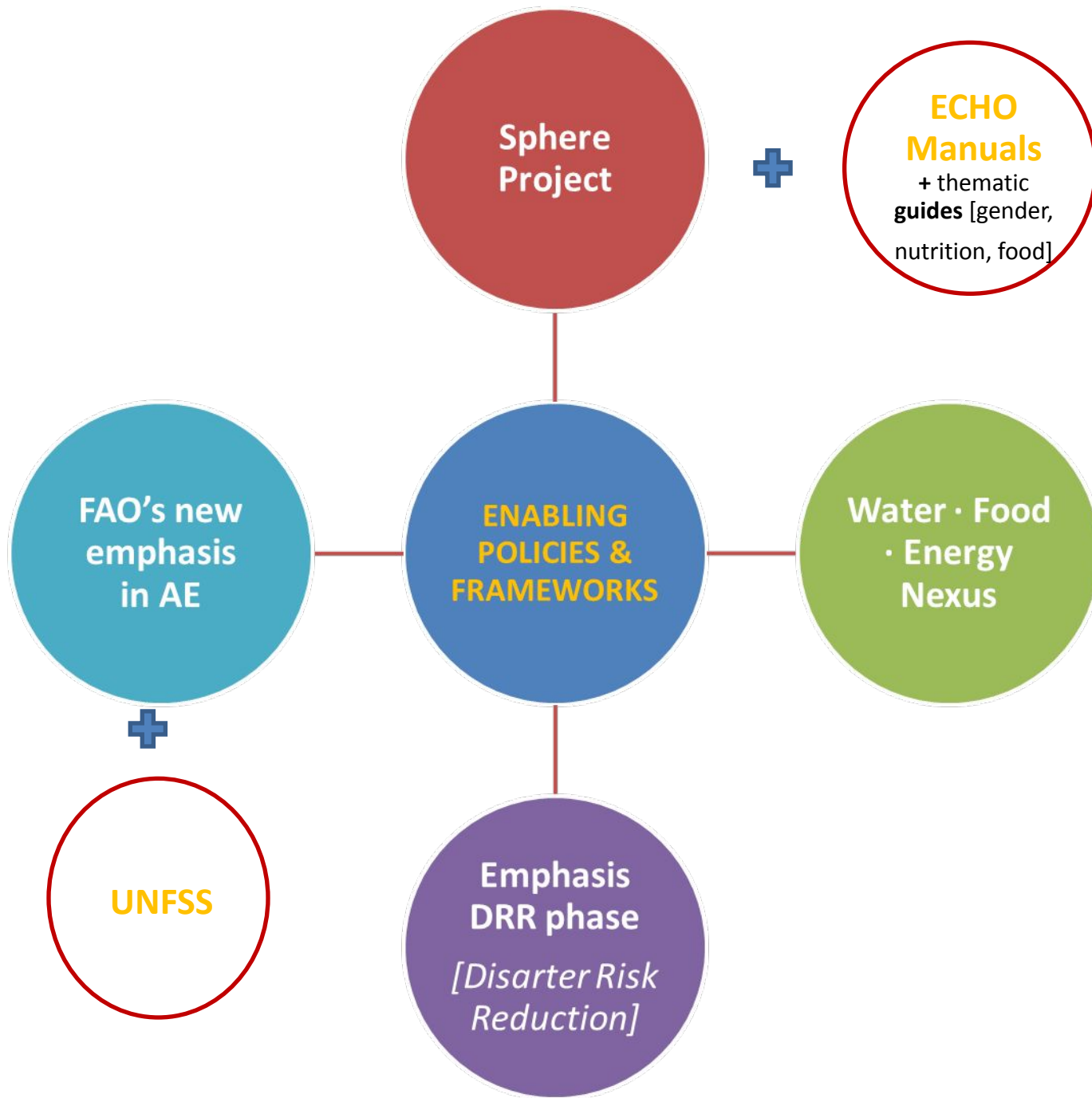
*Preparedness & resilience*

**Food Value Chain according to FSC:** from direct and instant access to food, to rural development and productivity improvement (food security guaranteed through humanitarian & developmental interventions)



## GFSC STRATEGIC PLAN 2017-2019: RESULTS AND FOCUS AREAS







## Actors-interviews

- 1 – Few identified actors whose experience link both areas of expertise: HA+AE
- 2 – Professionals linked to AE show great interest on the link to humanitarian contexts, even though very few were familiar with this application.
- 3 – Professionals linked to development/humanitarian sectors, and specifically within the livelihoods specialization, have not previously thought about this possibility, generally reluctant.
- 4 – Gap between official intentions (norms, programs) and real linkage between HA& Dev. in practice. Despite some org. highlight the need to apply a holistic and integrated approach in their strategic documents, its application remains way behind.

## WEAKNESSES

- Limited knowledge of what AE implies, apart from agricultural practices.
- Perception of the (alleged) negative effects for food security that AE may imply.
- Limited by the access to local resources (land, hybrid resources, local markets; local legislation)

## THREATS

- Perception of incompatibility with the “time” of the HA (short-term)
- Perception that is not applicable in broad contexts
- Potential evolution/changes of the crisis
- The integration of HA and Development is still weak

## STRENGTHS

- Specific practices can help to close the gap for an AE approach (gardens, agroforestry...)
- Methodologically, systems-based designed interventions are highly compatible with the holistic focus of AE.
- *Cost-effective* practices (in comparison to distribution of food)
- Low impact on local market prices, and their strengthening.
- Reduces dependency of beneficiaries
- Strengthens communities (social and psychologically).
- Local appropriation and cultural adaptation.
- Equity and gender justice

## OPPORTUNITIES

- Good timing for promoting AE in the humanitarian context: Donor fatigue - Cronification of displacements- Greater nº of displacements
- Current model of resilient/*self-reliance* humanitarianism: Reinforcement of local/ national levels. Responsibility- Long-term dev. strategies (through the link with dev.). - Humanitarian Ecosystem, adapted to the context.
- Pre-crisis phase of the humanitarian aid cycle allows for the application of AE within *Disaster Risk Reduction* strategies.
- Demand of AE interventions by the refugee population.
- Demand of studies that may support its application.
- Expansion of local AE and peasants/farmers organizations.
- Growing numbers of climate displacements.
- Space for scaling up its applicatio.
- “New” niche; Urban AE (reports back growing importance).



***"We are overwhelmed by demand"***

Clement Okia · Project manager UG. · ICRAF

***"There is a great need of academic studies that  
back up these initiatives with evidence, data  
and statistics"***

Natalie Topa · *Danish Refugee Comitee*



Fundació "la Cabra"  
Palau Macaya

SUBSCRIBITEU

ACTIVITATS AIXIRI CONVOCATÒRIA VISITANS

PALAU MACAYA > ACTIVITATS > CONVOCATÒRIA DE PROJECTES DE REFUGI > L'AGROECOLOGIA COM A RESPOSTA SISTÈMICA I SOSTENIBLE EN CONTEXTOS DE DESPLAÇAMENT FORÇOS > 5<sup>a</sup>



**Projecte Selecció Convocatòria**

**CONFERÈNCIES I DEBATS**

**5<sup>a</sup> - L'AGROECOLOGIA EN L'ACCIÓ HUMANITÀRIA: ESPAI D'OPORTUNITAT?**

**EXPLORANT ESPAIS D'OPORTUNITAT**

DILLUNS 15 DE NOVEMBRE DE 2021

Conferència inaugural de presentació del seminari, en la qual es presentaran les conclusions de l'estudi exploratori previ i s'introduiran els eixos de treball.

De caràcter divulgatiu, experts i experts introduiran contextos, reptes i oportunitats de l'agroecologia en contextos de refugi i desplaçament forçats, per reflexionar sobre les finestres d'oportunitat cap a la regeneració del model humanitari actual. S'obrirà un diàleg posterior amb les persones assistents.

A càrrec de:

**Marta G. Rivera Ferre**, professora d'investigació del CSIC a INGENIO, col·laboradora de la Càtedra d'Agroecologia i Sistemes Alimentaris (LVIC-UCC)

**Andrew Adam-Bradford**, consultor i investigador del Centre for Agroecology, Water and Resilience de la Universitat de Coventry

**Daniel Christian Wahl**, consultor i investigador del Centre for Agroecology, Water and Resilience de la Universitat de Coventry

UDivulga  
@UDivulga

Seminari internacional sobre el paper de l'agroecologia en els desplaçaments forçosos de persones

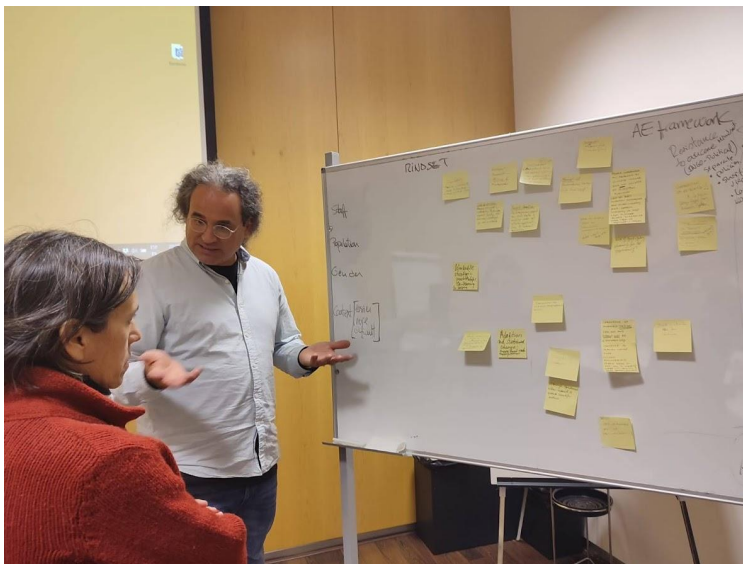
[wp.me/p5mF9t-5gN](https://wp.me/p5mF9t-5gN)

Traducir Tweet



Càtedra Agroecologia y 5 más

3:44 p. m. · 26 nov. 2021 · Twitter Web App









Whole compound is an interconnected water circuit,  
anchored by perennial stability.

Designing WITH nature and her patterns. Not imposing  
artificial patterns.



Baby food forest, intensively planted with locally  
adapted seeds, trees, vines ready for rains.



Integration of multiple design principles.

Increasing verticality and 3D placemaking for biodiversity, wildlife  
and soil organisms, punctuated by diverse and evergreen food forest  
trees, shrubs and vines.





**Water and nutrient captured, stored and held in protected soils and structures.**



**Site transformation – food abundance growing.**





August 30 2021 to Oct 15 (6 weeks)



Natalie Topa, DRC



# Baby Food Forest with Perennial Stability and Diverse food abundance in 1.5 years.





# After 8 weeks.





# Biointensive Permaculture Gardens





**I. AE ofrece un marco teórico-práctico muy apropiado para regenerar los sistemas alimentarios, medio natural, revitalizar economía local y medios de vida en contextos de desplazamiento forzado y crisis humanitarias**

**Mirada sistemas y receptiva a la complejidad**, evita el pensamiento en silos  
[no linealidad: principio emergencia y retroalimentación, interconexión, etc.]

**En muchos casos demanda población afectada**

[semillas locales, evitar la dependencia de insumos externos, más participación]

**Incorporar de raíz 3 ámbitos estratégicos** en la actual Acción Humanitaria

Justicia de género + Aceptación trabajar junto estructuras locales y reconocimiento capacidades locales + Estrategias adaptación cambio climático

**Donantes, búsqueda soluciones mayor impacto/exigencia uso eficiente recursos**

[efectos positivos más allá de la alimentación: economía, social, psicológica, participación democrática]



## **II. La importancia de construir un cuerpo de evidencias sobre AE en contextos de desplazamiento forzoso**

**Mejorar futuras intervenciones, y adaptar marco teórico a particularidades de los diferentes contextos desplazamiento**

[AE orientada al diseño regenerativo del territorio – más allá de la población desplazada/refugiada, plantar árboles es en bien común]

**Acreditar su idoneidad** frente responsables programas

[En 8 semanas se puede producir alimentos en pequeños espacios y generar excedentes]

**Escalar políticamente**

[Facilitar salir zona confort -facilitadores- y argumentos sólidos para confrontar – bloqueadores-]

## **Annex I – Brainstorming about possible research questions and research funding needs**

### **About AE Strategy**

What are our AE “shock green doctrine” for a radical transformation in crisis times?

What is the AE position about the lack of interest of the companies (business sector)?

### **About AE engagement with Resilience**

Resilience as a best word. Resilience as strategic entry point: How could influence the debate about resilience?

How does AE contribute to prepare people for resilience

### **About AE deep engagement with local context and conflict resolution**

The importance to know what capacities exist in local contexts

Could AE be a peace dividend among Host-Refugee-IDPs-Returnees / pastoralist-peasants?

What marginalized people is on those contexts?

The importance of indigenous knowledge within local context

### **About AE and program interventions**

Expand the research about bottlenecks. Why AE is not on the table?

What are the guidelines on how advice program teams towards AE

### **About AE Feminist approach**

Be clear about, what could be done in terms of feminist approach?

### **About AE measurement and evaluation**

Indicators valid for AE framework

What is a credible evidence – which are research methods more suitable?

Measure carbon fixation into the soil (ecosystem service)

### **About AE food production research**

How to handle the negative perception about less AE yield compared to conventional agriculture.

Negative impact of conventional agriculture on soil fertility  
How could we characterize the nutritional potential per m<sup>2</sup> or acres?

### **About AE research funding opportunities**

Search and identify research calls that might support AE research

### **About AE engagement with energy transition**

Issues of fossil fuel with in Aid industry *versus* bioregional supply



### III. La importancia de facilitar espacios democráticos mixtos población afectada – academia – profesionales

**Plurales y Adaptados** a la realidad de contextos concretos, nivel de aceptación de la AE, la posibilidad de sumar a iniciativas existentes o ventanas de oportunidad concretas.

La importancia del **factor humano** y **tejer complicidades personales** entre personas con un alto grado de conciencia sobre la importancia incorporar AE

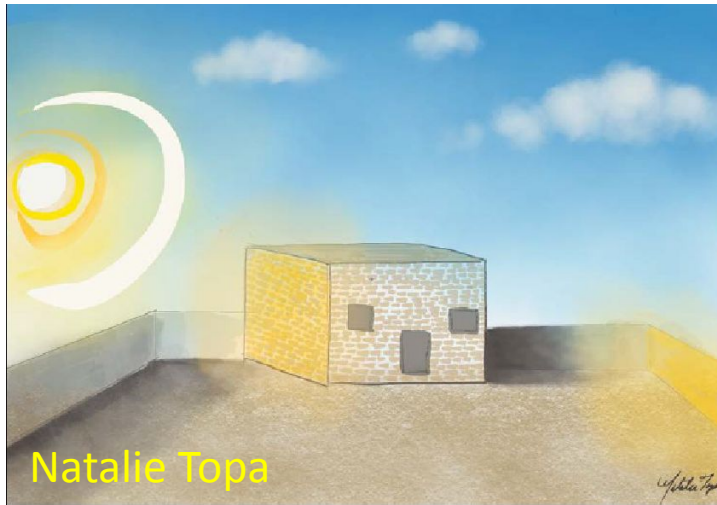
**Componente capacitación:** cursos formación, divulgación experiencias e investigación académica

Danish Refugee Council



# GRACIAS

[mgrivfer@ingenio.upv.es](mailto:mgrivfer@ingenio.upv.es)



Natalie Topa

